



FABRICATION



About Us

Established in 2002, ID Fabrication is a privately owned South Australian business.

Partnership is the cornerstone of our company culture. Our years of experience, combined with a collaborative and innovative approach, ensures construction, time, cost and quality objectives are met. We work with you to ensure the success of your project.

Our performance is supported by a third party accredited safety, quality and environmental management system, including:

- Structural Steelwork - Fabrication and Erection: AS/NZS 5131
- Safety: AS/NZS 4801 OHSAS 1800
- Quality: ISO9001
- Environmental: ISO14001

We take great pride in our workmanship and are highly committed to delivering a quality product on time, every time. We use highly qualified trades people with a strong attention to detail. Our Quality Management plans and rigorous audit schedules ensures repeatable high performance that our clients can rely on.

ID Fabrication differentiates itself through its commitment to quality outcomes and

Why choose ID Fabrication?

Our fundamental objective is to be a steel fabrication partner of choice and we continually challenge how we achieve this. We have a track record of building long-term relationships with clients across both the private and public sectors and our long list of repeat clients is testament to this.

Safety Focus



Our highest priority is the safe delivery of each project. We have made a significant investment in our systems and processes to ensure the safety of our personnel. Testament to our safety culture is the outstanding achievement of 1,867 days (over 5 years) LTI free, as at July 2018.

rough its
phasing:

Project Partnership

Integrity



We work with our clients and designers to understand how we can add value to their projects through constructability advice, installation methodologies, product selection, or facilitating quick turnaround times.

We understand our clients have tight project deadlines. Before taking on a project we are open and honest with our clients and ensure we have sufficient capacity to achieve their deadlines.

Market Sectors

Services



Our focus and core business is infrastructure. We have vast experience in project works relating to the following market sectors:

- Civil Infrastructure
- Marine
- Water and Waste Water
- Resources
- Defence

Our capabilities within these market sectors are:

- Structural Steel Fabrication
- Installation
- Access Systems
- Aluminium and Stainless Fabrication
- Plant Manufacture and Repair
- Architectural Steel



PROJECTS



Civil Infrastructure



Obahn City Access Project

Client: DPTI | Head Contractor: McConnell Dowell | \$1.1 million | Adelaide, SA | 2016

The O-Bahn City Access Project involved the creation of priority bus lanes along Hackney Road and a dedicated 670 metre bus tunnel under the Eastern parklands of Adelaide, providing faster, more reliable access for O-Bahn buses into the city.

ID Fab was initially engaged by the head contractor to fabricate and install over 7,000 cast-in items welded to sheet piles to support the base slab and corbel. Through strong performance, ID Fab were awarded additional work packages which increased initial scope by 400%. These works included fabrication and installation of five VMS boards and of busway guides.



Torrens to Torrens

Client: Torrens to Torrens Alliance | \$3.9 million | Adelaide, SA | Feb 2016- Aug 2018

The Torrens Road to River Torrens Project involves a 4km non-stop roadway (incorporating a 3 km lowered motorway), between Ashwin Parade, Torrensville, and Pym Street, Croydon Park, providing significant travel time saving to commuters and freight.

ID Fab was engaged by the Alliance to complete over 20 works packages, demonstrating strong performance and a solid relationship with the client. Works included the Cedar Avenue Pedestrian Bridge steel super structure (30m long and 40t in weight), gantries, architectural noise walls, bridge barriers, and anti throw screens.



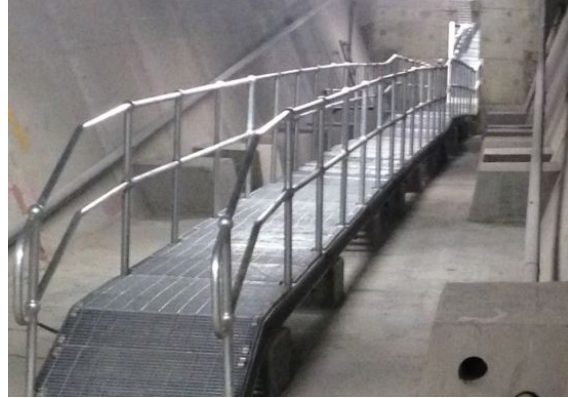
Northern Expressway

Client: DPTI | Head Contractor: York Civil
Fulton Hogan JV | \$1.6 million | Adelaide, SA
| Nov 2009 to Jul 2010

The Northern Expressway is a 23km road with a pedestrian and cycle pathway linking the Gawler Bypass with Port Wakefield Rd. ID Fab were engaged to supply steel work components for project.

The works included 24 counter-levered gantry posts with one portal gantry, 12 overpass bridge crash barrier railing modules, and a 500m architectural weathered steel Snake Wall.

Over 7,457 man-hours were completed on this project LTI free.



South Road Superway

Client: DPTI | Head Contractor: Urban
Superway Consortium | \$1.2 Million |
Adelaide, SA | Oct 2013 - Jun 2014

The South Road Superway features a 4.8km non-stop corridor and comprises a 2.8km elevated roadway.

ID Fab was engaged by the head contractor to supply and install all access platforms for the viaduct inside the bridge structures. ID Fabs commitment to quality and program led to a 300% scope increase.

Over 8,000 man hours were completed LTI Free.

Civil Infrastructure



Adelaide Wharf De-Construction Project

Client: ExxonMobil | Head Contractor: McConnell Dowell | \$700K | Port Stanvac, SA | Sep-Nov 2016

The project involves the demolition of the Port Stanvac wharf, which extends 670 metres into the deep waters of the Gulf St Vincent at the former Adelaide Refinery site.

ID Fab was engaged by the head contractor for the fabrication, supply and installation of temporary steel works to enable the demolition of the wharf structure. Over 80 tonnes of steel was fabricated in the construction of lifting frames and support beams.



Brisbane Terminal Redevelopment

Client: DP World | Head Contractor: York Civil | \$5.3 million | Nov 2012 - Jul 2013 | Brisbane, QLD

ID Fab undertook the construction and erection of 820 tonne of steel fabrication works for the redevelopment of the existing DP World Terminals 4 to 7 at Fisherman Island. The project consisted of 23 reefer towers, 16 portal frames for signage, two optical container rooms and an entry awning.

This was ID Fab's first project outside of South Australia requiring the company to implement new quality control processes. This ensured that material control and handling in the ID Fab workshop located in Adelaide transferred across the country as a quality structural steel product.

To meet the project's tight deadlines ID Fab turned over 30t of structural steel per week over a three month period, operating 24 hours a day through two 12 hour shifts. Quality and safety standards were maintained during this period with zero lost time injuries recorded throughout the project.

Marine Infrastructure



Fremantle Bridge Pier Protection

Client: York and Marine Civil JV | \$600K |
Fremantle, WA | Jul - Sep 2015

The Fremantle Road and Rail Bridge Strengthening Project involved pier strengthening works at Fremantle's traffic and rail bridges over the Swan River.

ID Fab was engaged to supply four steel jackets weighing 23 tonne each. The jackets will act as fenders for the Fremantle rail bridge and protect the concrete piers against passing ships.



Glenelg Gates Refurbishment

Client: DEW | \$500K | Glenelg, SA |
Apr 2014 - Oct 2014

The Glenelg Gates provide critical services including mitigating flooding from sea storm surge and storm water flood flows. The main project objective included improving the reliability and safety of the gates and extending the operational life of the structure.

ID Fab was engaged to fabricate, supply and install galvanised hand rails, infill panels for stop log guides, structural steel framing for the lock walkway extension, fabrication of two removable lock walkway platforms, and supply and coat 16m circular steel piles.

Works also included the remediation of damaged weir gates to be immersed in sea water. This involved the application of protective coatings

Marine Infrastructure



Pike Floodplain Regulator

Asset Owner: Department for Environment and Water | \$190K | Riverland, SA | Mar 2015- Apr 2015

As part of the Murray River Riverine Recovery Project, new regulating infrastructure within the Pike Floodplain was constructed. ID Fab were engaged for the design, fabrication and commissioning of eight aluminium drop board gates and a self-engaging lifting frame for the housing of the drop boards.

With a tight timeframe set by the client, ID Fab collaborated effectively with designers to develop innovative and time saving construction techniques. ID Fab is very proud to have been involved in such a prestigious project.



Deep Creek Regulator

Asset Owner: Department for Environment and Water | \$90K | Riverland, SA | Sep - Oct 2014

As part of the Murray River Riverine Recovery Project a vertical slot fishway and a 7m bridge and regulator was constructed. ID Fab was engaged for the design, fabrication and supply of six vertical slot baffles, two walkways, an electrical cabinet steel platform, grid mesh and hand rails.



Broome Wharf Extension of Life

Asset Owner: Kimberley Ports Authority |
\$385k | Jan - Jun 2016 | Broome, WA

The Port of Broome Wharf is the principal deep water port servicing the Kimberley region of Western Australia. Significant renovation works were required to extend the life of the wharf which was constructed in the 1960's.

ID Fab was engaged to fabricate, supply and install headstock stiffeners, "T" beams, longitudinal beams, access platforms and handrails. Works were successfully completed over water with workers obtaining Maritime Security Identification Cards. ID Fab collaborated with head contractor and client and ensured works did not disrupt port operations.



Chowilla Regulators Project

Asset Owner: Murray Darling
Basin Authority | \$630K | Renmark, SA |
October 2010 - June 2014

The Chowilla Regulators project was constructed as part of the Living Murray program, the largest river restoration program in Australia. This involved the construction of an 85m long, 14-bay weir structure and four associated flow regulators.

ID Fab was engaged to complete the stainless and structural works, which included stainless steel guides for the concrete stop logs, access stairs and hand railing, and temporary works structures involving structural beams and railing to support the 50T crane installing concrete stop logs.

Water and Wastewater Infrastructure



Bolivar WWTP - Access Platforms

Client: Allwater | **Head Contractor:**
York Civil | \$770k | Adelaide, SA |
June 2014 - Sep 2015

ID Fab was engaged to supply and install all the access platforms for the upgrade for the Bolivar Waste Water Treatment Plant. ID Fab successfully collaborated with the head contractor and plant operator, Allwater, to ensure the installation was completed safely and on time.



Queensbury Waste Water Pump Station Project

Client: SA Water | \$560K | Adelaide, SA |
July 2013 – December 2014

ID Fab was engaged on the Queensbury Pump Station Revitalisation Project which involved the structural building, housing all pipework and access structures. In a congested construction site with multiple interfaces, ID Fab provided support and flexibility to the client ensuring works were completed safely and on time.



Hope Valley Tanks Upgrade

Client: SA Water | Head Contractor:
York Civil | \$2 million | Adelaide, SA |
Oct 2016 - April 2018

The Hope Valley Tank Upgrade was required after a partial roof collapse. The roofed concrete tank is 175m wide, 125m long and has 10m high sloping walls – an underground footprint the size of a soccer field - and is the largest single-cell potable water storage tank in the State. The concrete structure that supports the roof – 117 columns, numerous girders, rafters and purlins - had degraded considerably and was found to no longer be fit for purpose. ID Fab successfully collaborated with the head contractor, to develop safe and innovative ways to remove the old concrete composite roof (which weighed over 2,300 tonnes). The new roof is 220 tonnes of structural steel.

Custom Work Box:

The 22,000m² roof on the Hope Valley Tank had to be deconstructed entirely from above due to the potential for collapse. With up to 4,000 man-hours worked from within work boxes suspended from cranes, the safety, comfort and efficiency of the crew in the work box was identified as a high priority, and key to the success of the project.

Through early consultation with the work crew, supervisors and engineers, ID Fab fabricated a custom work box to provide a safe, comfortable workplace for the deconstruction crew. Incorporating a 400mm wide access hatch in the floor, wall cut-outs and a large 6m x 1.5m footprint, the work box allowed the crew to work safely, comfortably and efficiently. Lockable hatches on the floor enabled safe access to the roof structure without the need to lean out of the work box. Space for tools, PPE, water, spares, rigging equipment and emergency/first aid supplies was also available without restricting the work area. The large working area also minimised crane movements.

ID Fab also provided shop drawings and fabrication of structural steel elements including the roof structural beams, roof connection plates, wall beams and roof access handrails and walkways.

Architectural Steel



Northern Expressway Snake Wall

As part of the 23km long Northern Expressway project, ID Fab was engaged to fabricate and install a 500m long architectural noise wall, known as the Snake Wall. The design intent replicates the Red Bellied Black Snake, a homage to the Kurna Aboriginal community that called the land around the Northern expressway 'Snake Country'. Over 200t of weathered steel was used to create the iconic structure.



Torrens to Torrens Cedar Ave Pedestrian Bridge and Anti-Throw Screens

For the Torrens Road to River Torrens Project, ID Fab fabricated and installed architectural anti throw screens across the project's various bridges, including the Cedar Avenue Pedestrian Bridge. The 30m long and steel super structure weighed a total of 40t and was successfully installed by the ID Fab team without incident and on time.



Torrens to Torrens Noise Walls

Up against challenging time frames working adjacent to a rail corridor ID Fab successfully fabricated and installed over 600ms of architectural noise walls to improve the visual amenity for residents.



River Bank Palais

The Riverbank Palais event was a highlight of the Adelaide Festival. ID Fab was engaged to supply, fabricate and construct the superstructure for the on water platform the event was held on. Over 400Tn of pontoons and supporting steel work went into the manufacture of the 14 pontoon superstructure.

After the event, the pontoon superstructure was clad with timber decking to transform it into a multi-purpose event space.

Over 5,000 man hours went into the manufacture and construction of the Palais with zero lost time injuries.

Defence Infrastructure



Techport Common User Facility Temporary Wharf

Client: Defence SA | Head Contractor: York Civil | \$137K | Aug - Oct 2016 | Osborne, SA

The Techport Common User Facility (CUF) was extended through the addition of two 11.2m long and 10m wide extensions at each end. ID Fab was engaged by the head contractor to design, supply, fabricate and install twelve pile caps, north and south precast support structural steel work, 64 lineal meters of hand rails and barriers (involving hot dip galvanizing), and fender backing boards including protective coating (supply only).

A primary requirement of the wharf extension contract stipulated that the works be undertaken without impacting on wharf activities. ID Fab proactively collaborated with the head contractor and client to meet all requirements of schedule, quality and cost without impacting on the operations of the facility.



Techport Common User Facility Pipe Kiosks

Client: Defence SA | \$65K | Apr - S 2016 | Osborne, SA

ID Fabrication was also engaged to design, fabricate and install a pipe kiosk at the Techport Common User Facility. Works included galvanising of the main frame, spigots and spigot support angles, aluminium stanchions, hand rails and gates. Due to the marine environment, surface protection and treatment was applied to avoid corrosion.



ACCESS SYSTEMS





ID Fabrication is a fast growing supplier of industrial access solutions.

We manufacture and supply gratings, handrail systems, expanded mesh, stanchions and other walkway infrastructure components.

ID Fab supplies major engineering, construction and structural fabrication companies across Australia, servicing small jobs through to very large projects in the mining and industrial sectors

Our specialist staff are supported by in-house and project management experts.

AUSTRALIAN PROUD

ID Fab proudly source all handrail steel products from Australian steel mills. This provides our clients with the highest quality and reliability, and supports the Australian steel industry and broader economy.

MATERIAL SELECTION

The team at ID Fab has supplied and installed access systems in a variety of environments such as wastewater treatment plants and marine infrastructure. We are experts in the corrosive nature of these environments and deliver solutions to suit. We provide hand rail and grating systems in stainless steel, mild steel, aluminium and fibre reinforced plastics (FRP) materials to suit our client's site requirements.



WATER TRUCKS



ID Fab offer a wealth of knowledge in the fabrication and commission of our range of water trucks. With capacity from 8,000L up to 38,000L these units are suited for dust suppression on construction and mining sites. They also provide support in a fire emergency response through top mounted hydraulic water cannons that can pump up to 2,800L per minute via controls in the cab.

Over the years we have continued to refine the shape, functionality, stability and durability of our water carts. We work closely with our clients to understand their requirements and deliver specific units suited to individual needs.

Design. The units have been internally designed and backed up with third party design certification as well as finite element analysis reports to ensure structural integrity and long term performance

Quality. The quality of workmanship is second to none. We engage hydraulic specialists and handle every aspect, internally from fabrication to fit out and electrical

Equipment. The units as standard come complete with a rear spray manifold, fill outlet, hose reel, full access system to the roof, hydraulic hydro cannon and a fully automated control panel in the cab

Optional extras include batter sprayers, front manifold with 2 spray heads, pneumatic fold-down handrail system.



7-11 Leith Street,
Wingfield SA 5013

PO Box 2600
Regency Park SA 5942

P (08) 8445 0712

E admin@idfab.com.au

W www.idfabrication.com.au

